



## INSTALLATION AND USER'S MANUAL

### **ALL MODELS:**

TOM 1151, TOM 1201, TOM 1201B  
TOM 3150, TOM 3155, TOM 3159,  
TOM 3020, TOM 3375  
TOM 4200, TOM 4203

**CONTENT**

INTRODUCTION.....3

SAFETY PRECAUTION.....3-4

WALL MOUNTING INSTALLATION.....5-11

PREPARE FOR INSTALLATION.....5

INSTALLATION(VENT OUTSIDE).....6-10

INSTALLATION(VENT INSIDE).....11

ISLAND MODEL INSTALLATION.....12-15

SLIM MODEL.....16-20

OPERATION.....20-33

MAINTENANCE.....33-34

TROUBLESHOOTING.....35E

ENVIRONMENTAL PROTECTION.....35

## **INTRODUCTION**

**Thank you for choosing this cooker hood.**

This instruction manual is designed to provide you with all required instructions related to the installation, use and maintenance of the appliance.

In order to operate the unit correctly and safety, please read this instruction manual carefully before installation and usage.

The cooker hood use high quality materials, and is made with a streamlined design. Equipped with large power electric motor and centrifugal fan, it also provides strong suction power, low noise operation, non-stick grease filter and easy assembly installation.

## **SAFETY PRECAUTION**

- ☐ Never let the children operate the machine.
- ☐ The cooker hood is for home use only, not suitable for barbecue, roast shop and other commercial purpose.
- ☐ The cooker hood and its filter should be clean regularly in order to keep in good working condition.
- ☐ Clean the cooker hood according to the instruction manual and keep the unit from danger of burning. There is a fire risk if cleaning is not carried out in accordance with the instructions.
- ☐ Forbid the direct baking from the gas cooker.
- ☐ Please keep the kitchen room a good convection.
- ☐ If the supply cord is damaged, it must be replaced by the manufacturer, its service agent or similarly qualified persons in order to avoid a hazard.
- ☐ There shall be adequate ventilation of the room when the range hood is used at the same time as appliances burning gas or

other fuels;

- The air must not be discharged into a flue that is used for exhausting fumes from appliances burning gas or other fuels;
- Regulations concerning the discharge of air have to be fulfilled.
- This appliance can be used by children aged from 8 years and above and persons with reduced physical, sensory or mental capabilities or lack of experience and knowledge if they have been given supervision or instruction concerning use of the appliance in a safe way and understand the hazards involved.
- Children should be supervised to ensure that they do not play with the appliance.
- Cleaning and user maintenance shall not be made by children without supervision.
- Do not flame under the range hood.
- CAUTION: Accessible parts may become hot when used with cooking appliance.
- The warning shall be in the same part of the instructions that include details of how to mount the equipment.

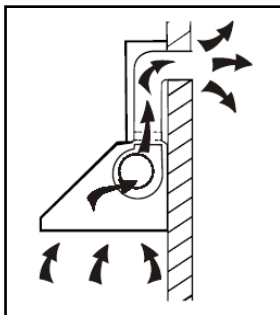
## **Electrical ShockHazard**

- Only plug this unit into a properly earthed outlet. If in doubt seek advice from a suitably qualified engineer.
- Failure to follow these instructions can result in death, fire, or electrical shock.

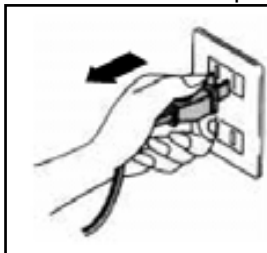
## WALL MOUNTING INSTALLATION

### 1. Prepare for installation:

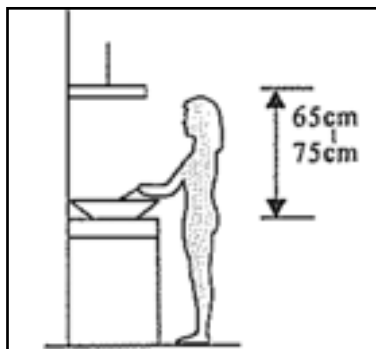
- a. If you have an outlet to the outside, your cooker hood can be connected as below picture by means of an extraction duct (enamel, aluminum, flexible pipe or inflammable material with an interior diameter of 150mm)



- b. Before installation, turn the unit off and unplug it from the outlet.



- c. The cooker hood should be placed at a distance of 65~75cm above the cooking plane for best effect.

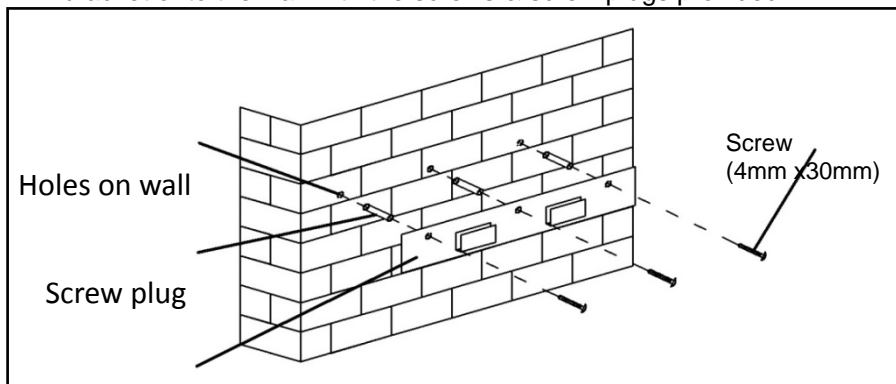


## 2. Installation (Vent outside):

**Attention!** Observe the warning in the instruction sheet concerning the operation of the appliance when air is discharged from the room.

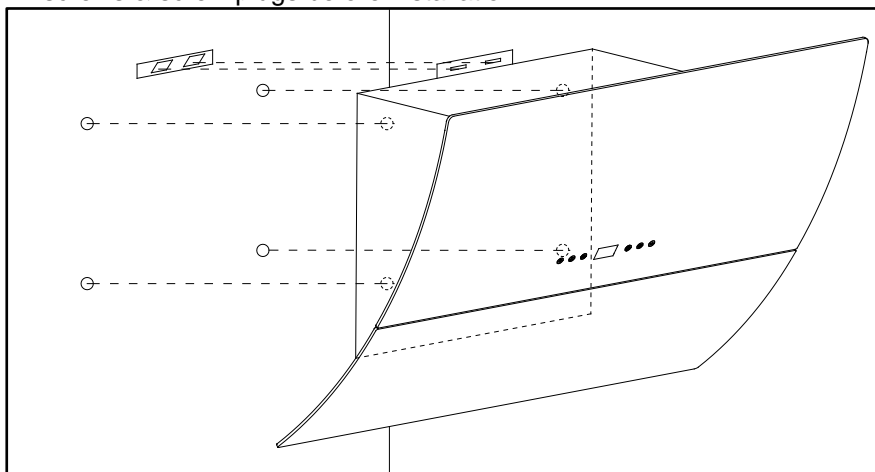
When the range hood and appliance supplied with energy other than electricity are simultaneously in operation, the negative pressure in the room must be not exceed 4 Pa ( $4 \times 10^{-5}$  Bar)

- Drill 3 x 8mm holes to accommodate the bracket. Screw and tighten the bracket onto the wall with the screws & screw plugs provided.

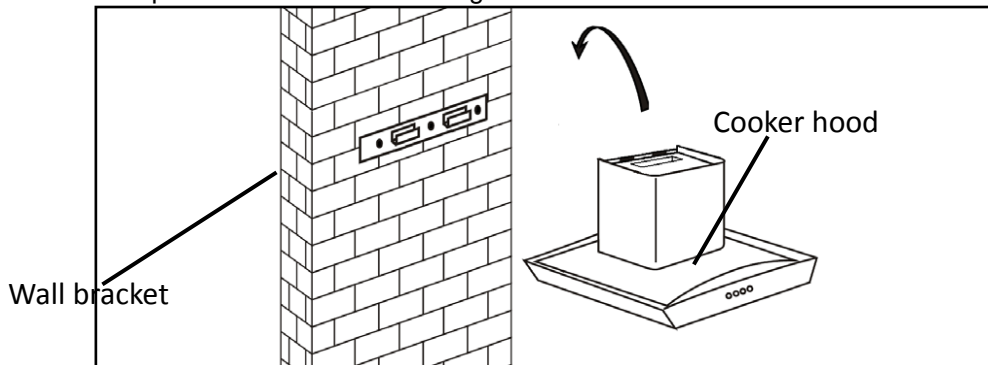


Wall bracket

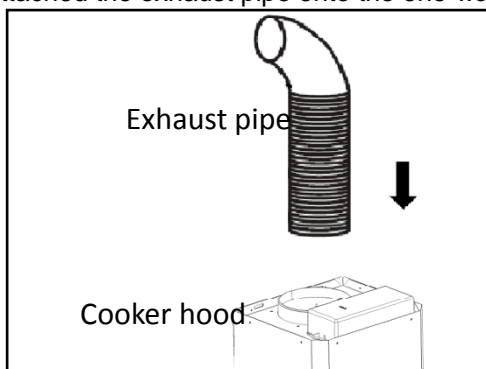
- For inclined panel Model, need to drill 4 x8mm extra holes & fixing screws & screw plugs before installation.



- Leave up the cooker hood and hang onto the wall bracket hook.



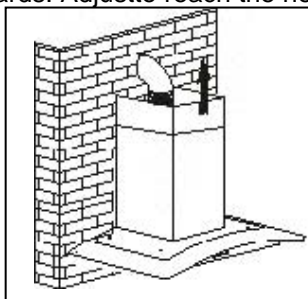
- Fix the one-way-valve to the air outlet of the cooker hood. Then, attached the exhaust pipe onto the one-way-valve as shown below.



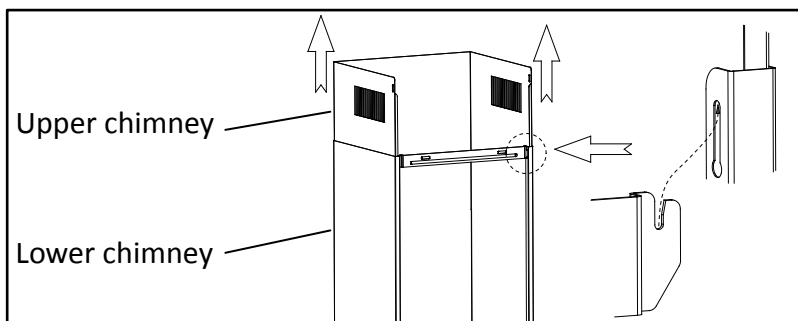
- Chimney installation.

### **For Glass model and T shape model**

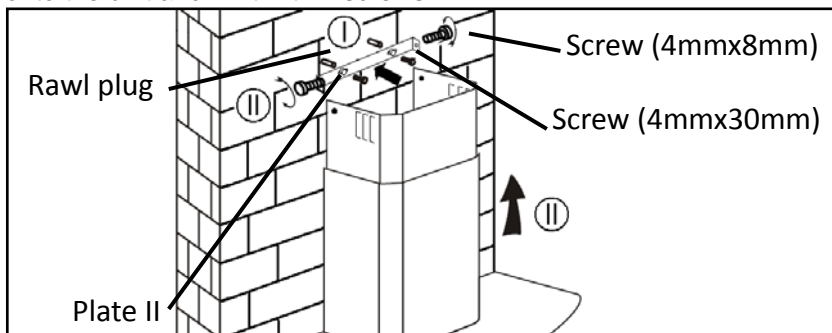
- ◆ By Put the upper chimney into lower chimney .Then pulling out the upper chimneyupwards. Adjustto reach the height required.



- ◆ Sliding the chimney to adjust the chimney height. When the height you required is reached, then hang the fixing hole to the fixing screws as showed in below pictures.



- ◆ Drill  $2 \times 8\text{mm}$  holes to accommodate the plate II. Screw and tighten the plate II onto the wall with 2 screws provided. Assembly the chimney onto the unit and fix it with 2 screws.

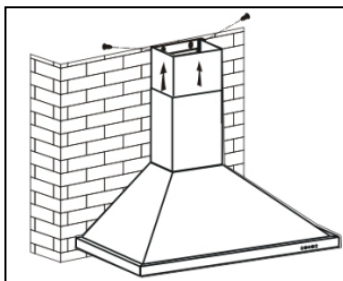


Warning: Failure to install the screws or fixing device in accordance with these instructions may result in electrical hazards.

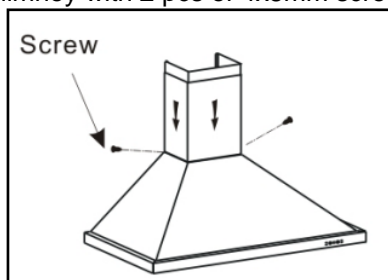


### For Tower model

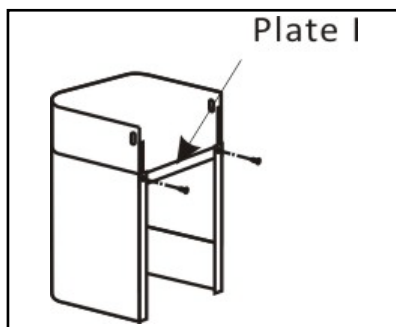
- ◆ By Put the inner chimney into upper chimney .Then pulling out the upper chimneyupwards. Adjust to reach the height required.



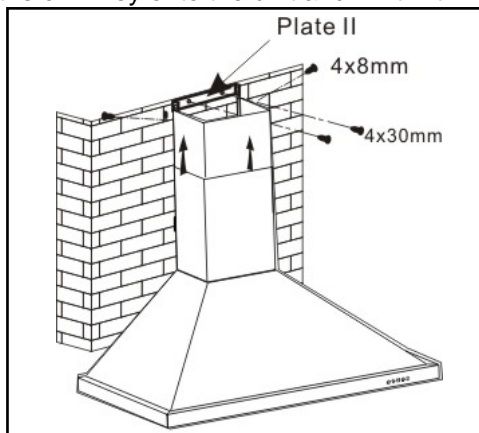
- ◆ Fix the lower chimney with 2 pcs of 4x8mm screws.



- ◆ Sliding the chimney to adjust the chimney height. When the height you required is reached, then fix 2 pcs of 4x8mm screws onto the hole fixing with plate I as showed in below pictures.

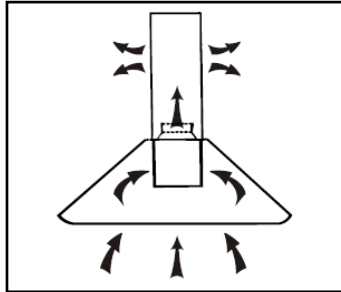


- ◆ Drill 2 x 8mm holes to accommodate the plate II. Screw and tighten the plate II onto the wall with 2 screws provided.
- ◆ Assembly the chimney onto the unit and fix it with 2 screws.



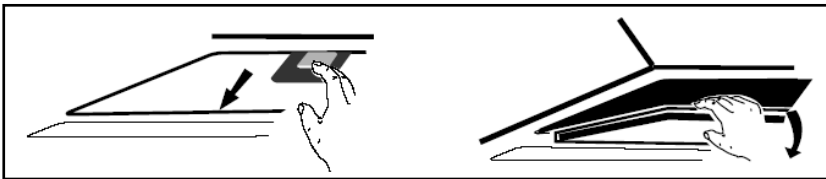
## Installation (Vent inside)

If you do not have an outlet to the outside, exhaust pipe is not required and the installation is similar to the one shown in section “**Installation (Vent outside)**”.

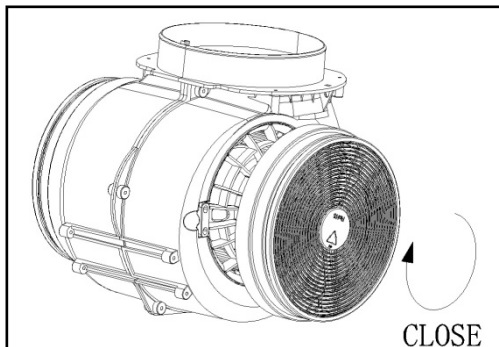


Activated carbon filter can be used to trap odors.

In order to install the activated carbon filter, the grease filter should be detached first. Press the lock and pull it downward.



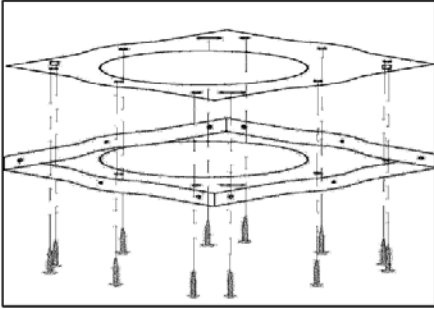
Plug the activated carbon filter into the unit and turn it in clockwise direction. Repeat the same on the other side.



### **NOTE:**

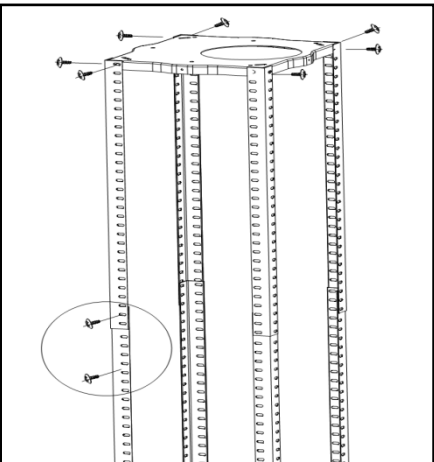
- *Make sure the filter is securely locked. Otherwise, it would loosen and cause dangerous.*
- *When activated carbon filter attached, the suction power will be lower.*

## ISLAND MODEL INSTALLATION



1) Position the hanging plate on the ceiling and then mark the position of the screw holes. The hanging plate should be securely fixed to the ceiling,

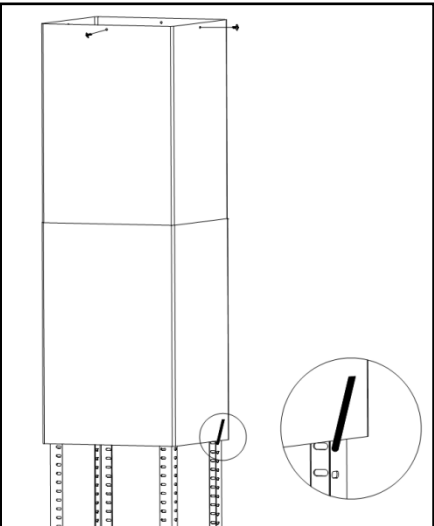
- 11 x ST6 (40 mm) screws for wooden ceiling
- 8 x expansion bolts for cement ceiling



2) Fix the angle bars to the hanging plate, using the 8 x M5 screws.

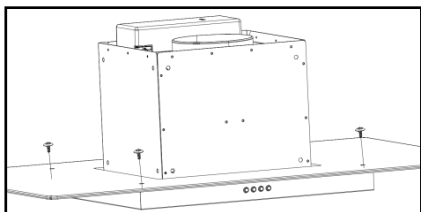
3) Extend the angle bars to the required height and then fix them in position using the 16 x M5 screws and nuts with metal washers.

● **IMPORTANT:** The angle bars must have an overlap of **AT LEAST 100 mm.**

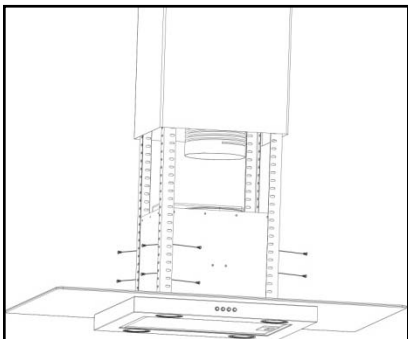


4) If your cooker hood is going to be used in extraction mode, then you should connect the ducting hose to the ceiling adaptor at this point. Fix the upper chimney section to the hanging plate, using the 4 x self tapping screws.

Slide the lower chimney section onto the angle bars and raise it until it sits just below the upper chimney section.



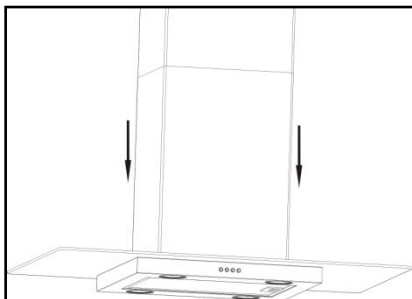
5) If the glass canopy has not been pre-assembled by the factory, then it should be fixed to the top of the main body of the cooker hood at this stage.



6) Lift the main body of the cooker hood onto the angle bar and then fix it into position using the 16 x M5 screws.

●**IMPORTANT: This stage of the installation process MUST be completed by two people.**

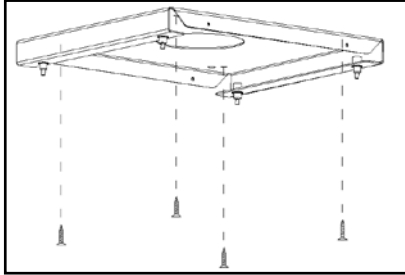
●**IMPORTANT: The 16 x M5 screws MUST be securely tightened.**



7) If you are going to be using the hood in extraction mode, you should fix the ducting hose to the ceiling.

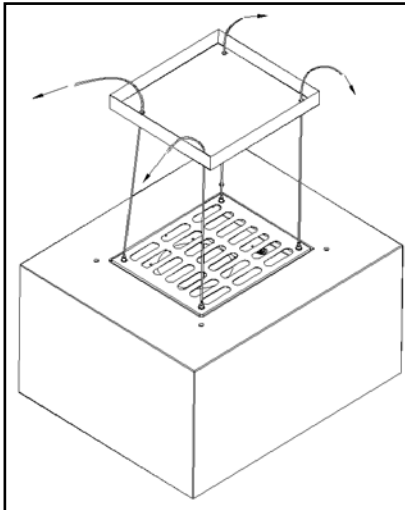
- The electrical connection must correspond to the electrical requirement noted on the rating plate, which is placed inside the cooker hood. The appliance should now be connected to the electrical supply.
- Check that the appliance is operating correctly by selecting each speed and switching the light bulbs on and off.
- Remove the hanging hook and then slide the lower chimney section downwards, until it rests against the main body of the cooker hood.
- Use a stainless steel cleaner and polish on the stainless steel sections of the appliance.
- If you are using the appliance in recirculation mode, then you should now fit the carbon filter. See the "fitting the carbon filter" section on page9.

## **LAMP HOOD MODEL INSTALLATION**

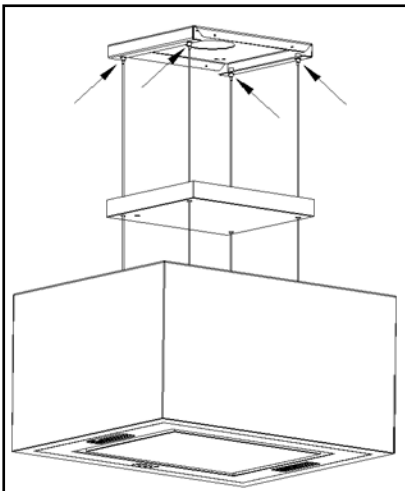


1) Position the hanging plate on the ceiling and then mark the position of the screw holes. The hanging plate should be securely fixed to the ceiling,

- 4 x ST6 (40 mm) screws for wooden ceiling
- 4 x M6 (60 mm) expansion bolts for cement ceiling



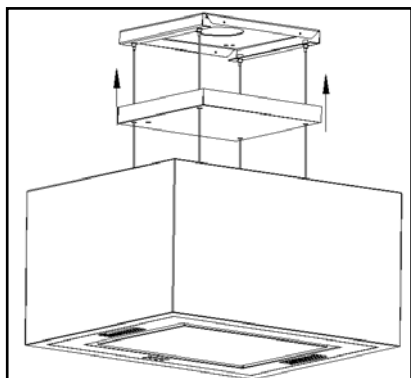
2) Make the fixing wire & Power cable pass through to the hole of hanging plate cover.



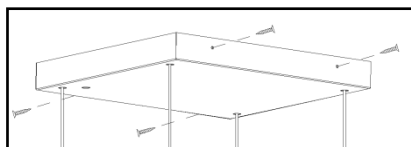
3) Fix the fixing wire in the special crew of the hanging plate & connect Power cable in the right way

● **IMPORTANT:** This stage of the installation process **MUST** be completed by two people.

● **IMPORTANT:** make the same length of the fixing wire to let the hood in balance level



4) Push the hanging plate cover up to the ceiling &



5) Fix hanging plate cover with 4 x ST4 (8 mm)screws

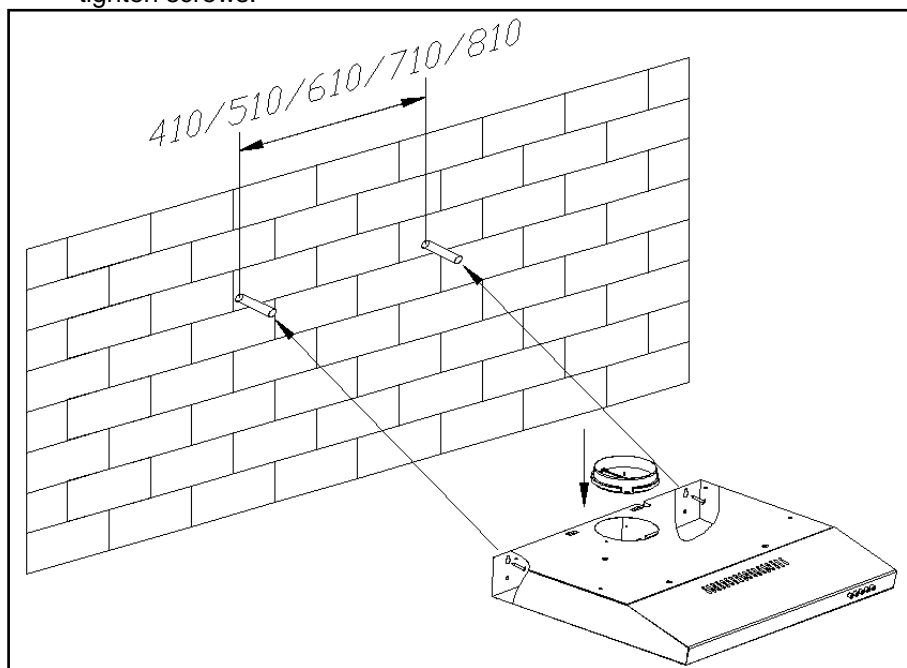
● **IMPORTANT: The 4 x ST4 screws MUST be securely tightened.**

- The electrical connection must correspond to the electrical requirement noted on the rating plate, which is placed inside the cooker hood. The appliance should now be connected to the electrical supply.
- Check that the appliance is operating correctly by selecting each speed and switching the light bulbs on and off.
- Use a stainless steel cleaner and polish on the stainless steel sections of the appliance.
- If you are using the appliance in recirculation mode, then you should now fit the carbon filter. See the "fitting the carbon filter" section on page 9.

## **SLIM MODEL INSTALLATION**

### **Way one:**

- To install onto the wall drill 2 holes of Ø8mm on a suitable place according with the centre distance of hole in the back of the cooker hood.
- Insert the nut into the holes.
- Insert the screws into the nuts and tight. Put the cooker hood onto the tighten screws.

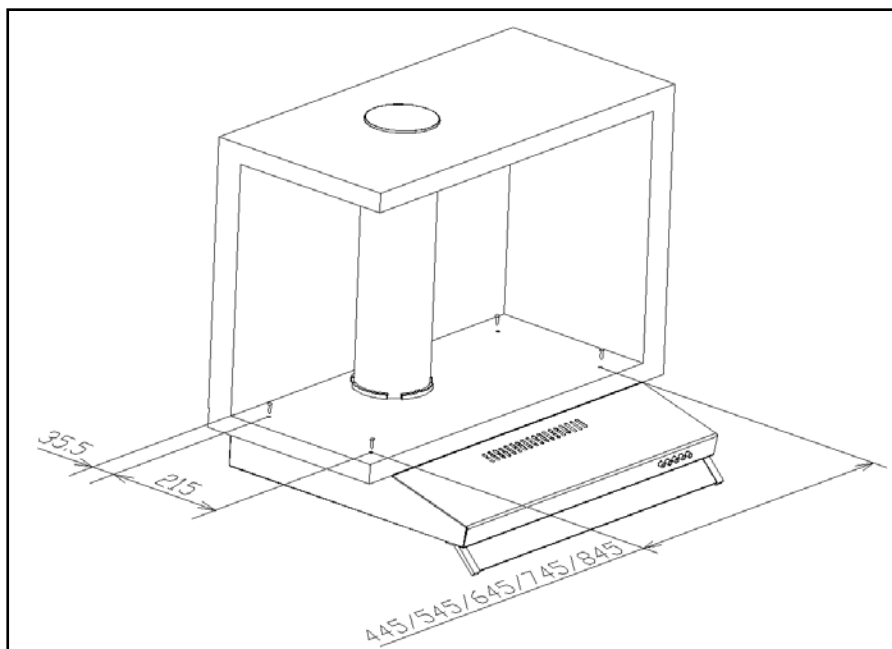


- Fix the cooker hood with safety screw. The two safety vents are positioned on the back casing, with diameter of 6mm.
- Put the one way valve onto the cooker hood.

### **Way two:**

- Drill 4 holes of 6mm diameter at the bottom of the hanging cupboard
- Put the one way valve on the cooker hood, then install the cooker hood on the bottom of the hanging cupboard, tighten the hood with enclosed 4 screws.





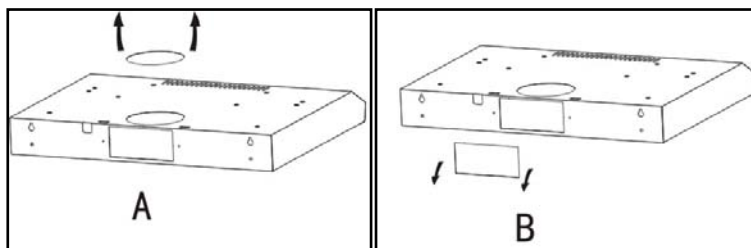
Note:

- 1.The extensible pipe are optional accessory, not supplied.
- 2.Take off protection film before installation.
- 3.There are 2 methods for ventilation , including ' horizontal ventilation' and ' vertical ventilation'. Please pay attention to the ventilation method when installation.

Vertical ventilation: See Pic A, please use tool take out the round cover before using, and the air can be vented from top

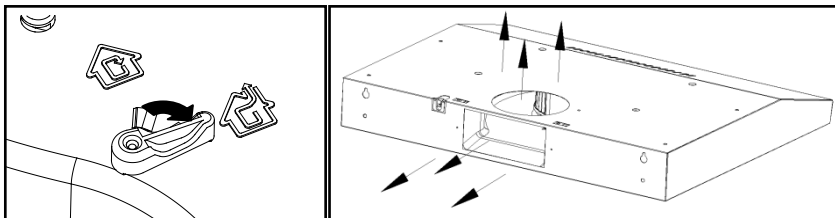
horizontal ventilation: See Pic B, please use tool take out the rectangular cover before using, and the air can be vented from back.

The rectangular air outlet for horizontal ventilation is not supplied.

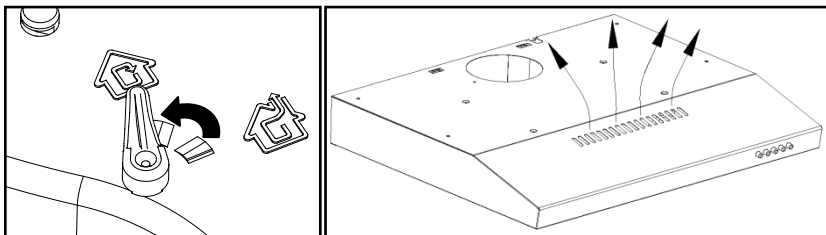


## Air ventilation setting

- Outdoor exhausting: Turn the adjuster to outdoor position, install the outlet, turn on the cooker hood, then the air will be vented from the outside outlet.



- Recycling: the recycling mode with carbon filter ,Turn the adjuster to indoor position, install the outlet cover, turn on the cooker hood, then the air can be vented from the inside outlet.

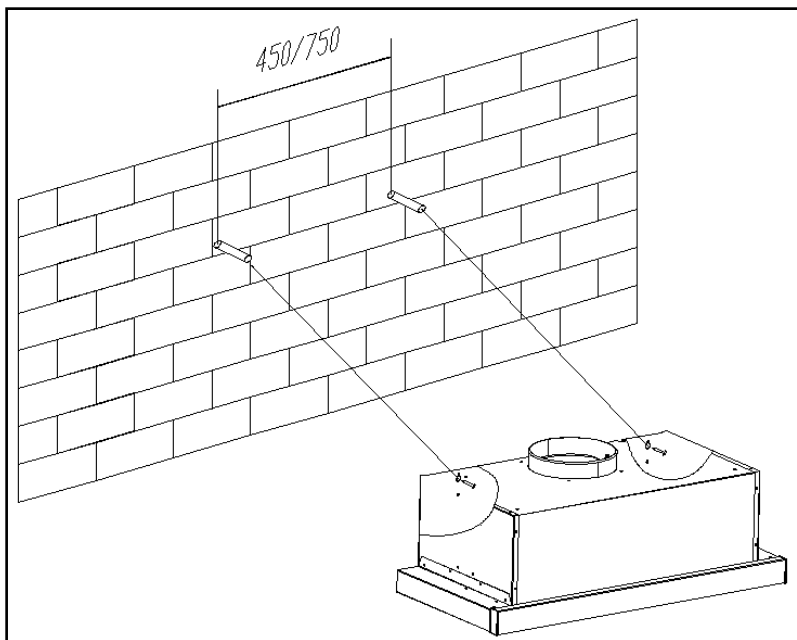


- Note: The charcoal filter is mounted on the back of the grill and must be changed once three month.
- Warning: the charcoal cannot be washed or recycled. It should be changed at most after 120 hours using. The carbon filter shouldn't be exposed to heat.

## **TELESCOPIC MODEL MODEL INSTALLATION**

### **Way one:**

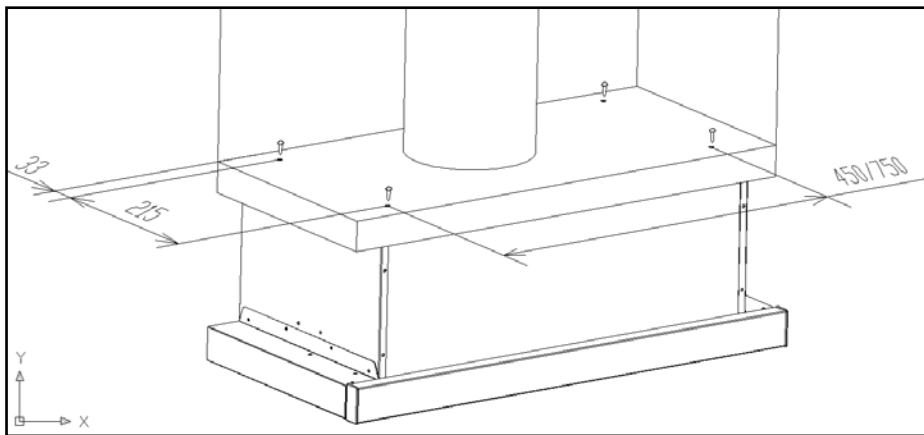
- To install onto the wall drill 2 holes of Ø8mm on a suitable place according with the centre distance of hole in the back of the cooker hood.
- Insert the nut into the holes.
- Insert the screws into the nuts and tight. Put the cooker hood onto the tighten screws.



- Fix the cooker hood with safety screw. The two safety vents are positioned on the back casing, with diameter of 6mm.
- Put the one way valve onto the cooker hood.

### Way two:

- Drill 4 holes of 6mm diameter at the bottom of the hanging cupboard
- Put the one way valve on the cooker hood, then install the cooker hood on the bottom of the hanging cupboard, tighten the hood with enclosed 4 screws.



### Note:

- 1.The extensible pipe are optional accessory, not supplied.
- 2.Take off protection film before installation.

## **OPERATION**

### **Mechanical Rocker button**

It just appear in TELESCOPIC MODEL.



**Light button** On the left side of hood.



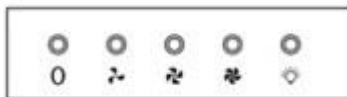
**Speed button** On the right side of hood.

“=”: high speed level.

“—”: Low speed level.

“o”: Off

## Push button/Electronic button 1



### 0 Off button

It's used for turning off the fan.

### Low Speed button

It's used for Ventilation on the kitchen. It is suitable for simmering and cooking which do not make much steam.

### Medium Speed button

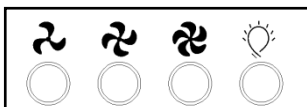
Airflow speed is ideally for ventilation in standard cooking operation.

### High Speed button

When high density of smoke or steam produced, press high-speed button for highest effective ventilation.

### Light button

## Electronic button 2



### Low Speed button

It's used for Ventilation on the kitchen. It is suitable for simmering and cooking which do not make much steam.

### Medium Speed button

Airflow speed is ideally for ventilation in standard cooking operation.

### High Speed button

When high density of smoke or steam produced, press high-speed button for highest effective ventilation.

### Light button

*NOTE: If Low / Medium/ High speed buttons are press at the same time, the unit will only operate at the highest speed.*

## Touch control 1



### On/Off button

It's used for turning on/off the fan.



### Speed plus button

For increasing the speed of the fan



### Speed decrease button

For decreasing the speed of the fan.



### Light button

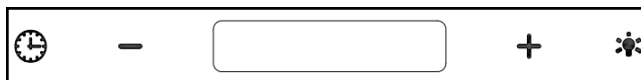


### Digital display

Fan speed display: "1" for Low speed, "2" for Medium speed, "3" for High speed.

**Quick timer:** Press **+** & **-** hold for 1 second, Digital display will flashing & into 5 minutes count down, after 5 minutes motor & light will turn off automatic & Buzzer sound for 1 second.



## Touch control 2



After plug in power, will into Stand By mode automatic.



### Timer button

Time setting, keep pressing it in stand by mode, into time setting, hour display flashing, press" **+** "or" **-** " for setting, press"  " change to minute setting, press" **+** "or" **-** " for setting, press"  " again or wait 10s finish time setting.

Timer setting, short press during working mode, pre-set cycle :off  
→ 15mins → 30mins → 45mins → 60mins → off, " **+** "or" **-** " for  
adjusting timer time, except "off" timer setting.

**Quick timer:** Press **+** & **-** hold for 1 second, Digital display will flashing & into 5 minutes count down, after 5 minutes motor & light will turn off automatic & Buzzer sound on.

**+** **Speed plus button**  
For increasing the speed of the fan

**-** **Speed decrease button**  
For decreasing the speed of the fan.

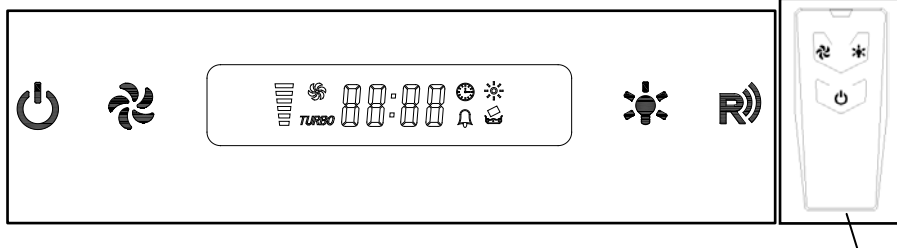
**💡 Light button**  
Short press for lamp power control.  
Long press  
1. For turning off the “Cleanning symbol”& reset total working time when “Cleanning symbol” is on& motor or lamp is on.  
2. For checking current total working time when “Cleanning symbol” is off.

### LCD display



1. Fan symbol, will turn when the fan is working
2. Time display
3. Timer
4. Light
5. Fan speed
6. Alarm symbol
7. Cleanning symbol, appear when total working time up to 14 hours or at the first time using after plugging.

## Touch control 3(Normal model)



Batteries thin film

Switch Picture

RemoteControl



Picture

**Before use the remote control please Remove the battery film!**

### STANDBY MODE.

After plug in, just  flashing slowly, system in **STANDBY MODE**.

 "ON/OFF" key:

In **STANDBY MODE** press  display & all buttons light on, hood in **WORKING MODE**. If it's the first time start up motor working in LOW speed & light off automatically; or recover from the same setting of last working operation. (Same for  in Remote control)

In **WORKING MODE**, press , motor stop working, but light will not change statue

In **WORKING MODE**, press  & hold for 3 seconds, Motor & light stop working, back to **STANDBY MODE**. (Same for  in Remote control with short press)

All other buttons just could work in **WORKING MODE**.

 "FAN SPEED" key:

Button for changing the speed of motor following cycle "Low-Middle-High". (This key could not stop motor working.)

(Same for  in Remote control)

 "Light" button


Short press for lamp power control.



Long press





1. For turning off the "Cleanning symbol"& reset total working time when "Cleanning symbol" is on.
2. For checking current total working time when "Cleanning symbol" is off.

## CLOCK SETTING



In **STANDBY MODE**, press  +  & hold for 1 second, the "88:88" flashing & enter the **CLOCK SETTING MODE**.

In this state: pressing  for changing selecting hour or minute pressing  key for decrease.


pressing  key for increase


If press  +  key or without no any operation in **CLOCK SETTING MODE** for 5 seconds, will save automatically & exit **CLOCK SETTING MODE**.



## TIMER SETTING

When motor is working, press  +  & hold for 1 second, display flashing shows "00:00", enter the **TIMER SETTING MODE**.

In this state: pressing  for increase 15 minutes

pressing  for decrease 1 minute.

pressing  for increase 1 minute.

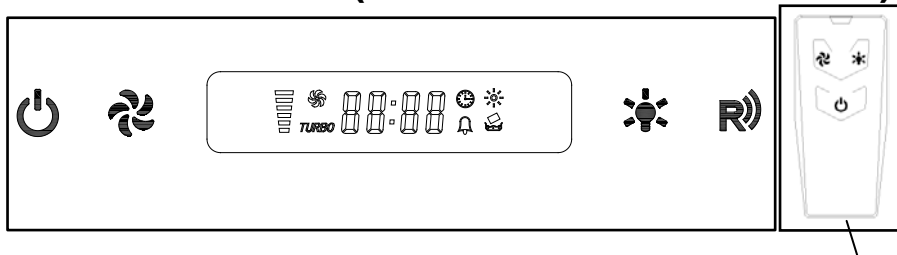
If press  +  key or without no any operation in **CLOCK SETTING MODE** for 5 seconds, will save automatically start to count down showing in display.

When time up, both motor & light will turn off automatically & come back to **STANDBY MODE**

**LCD display:**

Same as the **TOUCH CONTROL 2**.

# Touch control 4(Automatic window model)



Batteries thin film

Switch Picture



RemoteControl  
Picture


**Before use the remote control please Remove the battery film!**

## STANDBY MODE.

After plug in, just  flashing slowly, system in **STANDBY MODE**.

 "ON/OFF" key:

In **STANDBY MODE** press  the windows will open, when finish opening display & all button light on hood in **WORKING MODE**. If the first motor start working in LOW speed & light off automatically; or recover from the same setting of last working operation. **(Same for  in Remote control)**

In **WORKING MODE**, press  , motor stop working, but light will not change statue


In **WORKING MODE**, press  & hold for 3 seconds, Motor & light stop working , close window & back to **STANDBY MODE**.

**( Same for  in Remote control with short press)**



All other buttons just could work in **WORKING MODE**.


 "FAN SPEED" key:

Button for changing the speed of motor following cycle "Low-Middle-High". (This key could not stop motor working.)

 "Light" button  
For lighting On & Off



## CLOCK SETTING

In **STANDBY MODE**, press  +  & hold for 1 second, the "88:88" flashing & enter the **CLOCK SETTING MODE**.



In this state: pressing  for changing selecting hour or minute


pressing  key for decrease.


pressing  key for increase


If press  +  key or without no any operation in **CLOCK SETTING MODE** for 5 seconds, will save automatically & exit **CLOCK SETTING MODE**.



## TIMER SETTING

When motor is working, press  +  & hold for 1 second, display flashing shows "00:00", enter the **TIMER SETTING MODE**.

In this state: pressing  for increase 15 minutes

pressing  for decrease 1 minute.

pressing  for increase 1 minute.


If press  +  key or without no any operation in **CLOCK SETTING MODE** for 10 seconds, will save automatically start to count down, display shows the left time. When time up, both motor & light will turn off automatically & come back to **STANDBY MODE** (but the windows will not closed)


**LCD display:**

Same as the **TOUCH CONTROL 2**.

## MANUAL CLEARING MODE

**For cleaning operation:**

In **STANDBY MODE**, press & hold  for 3 seconds, (it must operate with the control panel on the hood) window open automatically. When the window opening complete, display as **STANDBY MODE**.

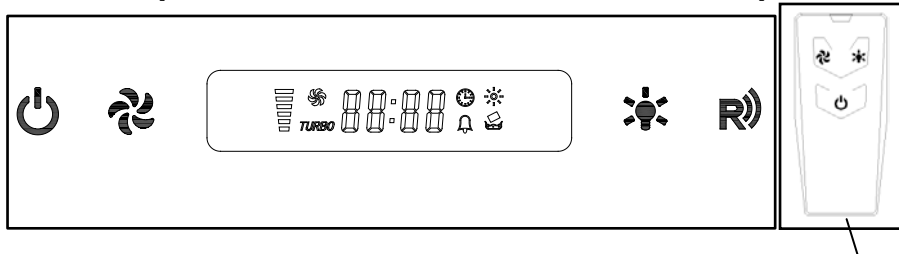
In **MANUAL CLEARING MODE**, press & hold  for 3 seconds (it must operate with the control panel on the hood), window close automatically. When the window closing

complete, system comes back to **STANDBY MODE**.

### Anti-clamp functions:

During the casement closing or opening, if there is obstruction, the operation stop immediately & run to opposite direction with a small distance.

## Touch control 5 (Heart & Smoke sensor model)



Batteries thin film

Switch Picture



RemoteControl  
Picture

**Before use the remote control please Remove the battery film!**

### STANDBY MODE.

After plug in, just  flashing slowly, system in **STANDBY MODE**.

### "ON/OFF" key:

In **STANDBY MODE** press  display & all buttons light on, hood in **WORKING MODE**. If it's the first time start up motor working in LOW speed & light off automatically; or recover from the same setting of last working operation. (Same for  in Remote control)

In **WORKING MODE**, press , motor stop working, but light will not change statue

In **WORKING MODE**, press  & hold for 3 seconds, Motor & light stop working, back to **STANDBY MODE**. ( Same for  in Remote control with short press)

All other buttons just could work in **WORKING MODE**.



### "FAN SPEED" key:

Button for changing the speed of motor following cycle "Low-Middle-High". (This key could not stop motor working.)

(Same for  in Remote control)





### "Light" button


Short press for lamp power control.

Long press

1. For turning off the "Cleanning symbol"& reset total working time when "Cleanning symbol" is on.
2. For checking current total working time when "Cleanning symbol" is off.



## CLOCK SETTING

In **STANDBY MODE**, press  +  & hold for 1 second, the "88:88" flashing & enter the **CLOCK SETTING MODE**.



In this state: pressing  for changing selecting hour or minute

pressing  key for decrease.


pressing  key for increase


If press  +  key or without no any operation in **CLOCK SETTING MODE** for 5 seconds, will save automatically & exit **CLOCK SETTING MODE**.



## TIMER SETTING

When motor is working, press  +  & hold for 1 second, display flashing shows "00:00", enter the **TIMER SETTING MODE**.

In this state: pressing  for increase 15 minutes



pressing  for decrease 1 minute.


pressing  for increase 1 minute.

If press  +  key or without no any operation in **CLOCK SETTING MODE** for 5 seconds, will save automatically start to count down showing in display.

When time up, both motor & light will turn off automatically & come back to **STANDBY MODE**

## AUTO(HEAT & SMOKE SENSOR) MODE

In STANDBY MODE, press  +  & hold for 1 second, working mode stop & into gather mode(sensor collecting ambient information for 1min).After 1min LED display showing "AUTO" means into AUTO mode. sensor monitor non-stop.

 button could stop AUTO mode and come back to STANDBY mode

**LCD display:**

Same as the **TOUCH CONTROL 2.**

## Touch Control TO05



1

2

3



### **Off button**

It's used for turning off the fan.

1

### **Low Speed button**

It's used for Ventilation on the kitchen. It is suitable for simmering and cooking which do not make much steam.

2

### **Medium Speed button**

Airflow speed is ideally for ventilation in standard cooking operation.

3

### **High Speed button**

When high density of smoke or steam produced, press high-speed button for highest effective ventilation.



### **Light button**

# Invisible Touch Control T006



1

2

3



## STANDBY MODE.

After plug in, just  flashing slowly, system in **STANDBY MODE**.



### **On/Off button**

It's used for turning off the fan. When plug in with electricity, press this button for 3 seconds and all buttons shine in and functions work. Logo shines in too.

1

### **Low Speed button**

It's used for Ventilation on the kitchen. It is suitable for simmering and cooking which do not make much steam.

2

### **Medium Speed button**

Airflow speed is ideally for ventilation in standard cooking operation.

3

### **High Speed button**

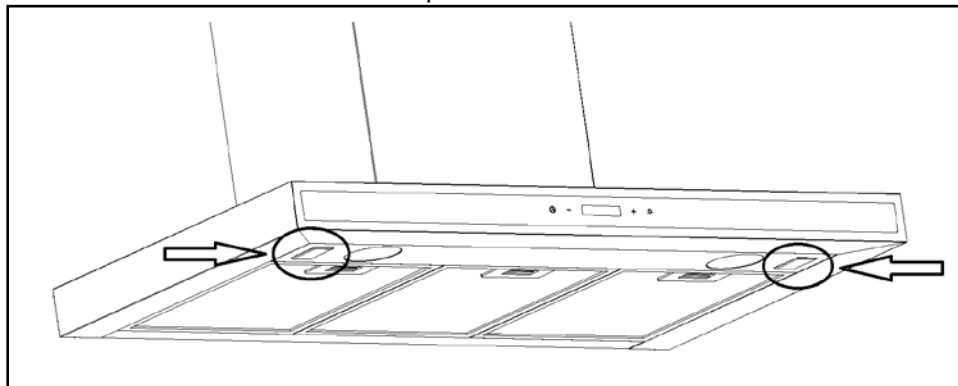
When high density of smoke or steam produced, press high-speed button for highest effective ventilation.



### **Light button**

## Infrared Sensor control

The sensor windows on the bottom panel of the hood.



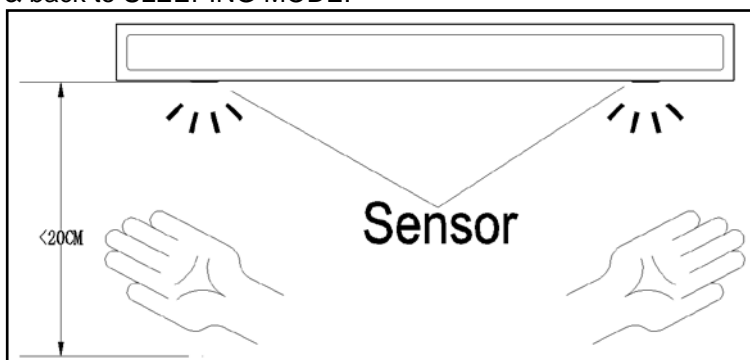
### SLEEPING MODE

After plug in turn on any functions (fan or light) by control panel, the Infrared Sensor turn to SLEEPING MODE automatically.

### WORKING MODE

In SLEEPING MODE, 2 opaque articles put under each sensor distance less than 20CM & hold 1 second to activate WORKING MODE, the indicate light will turn on.

In any WORKING MODE, redo this action, hood will stop all working & back to SLEEPING MODE.



### Fan control

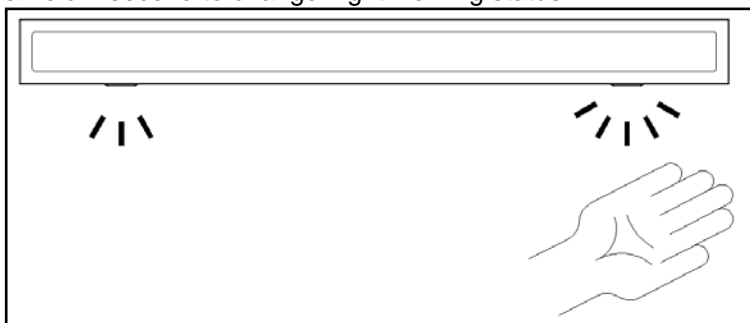
Opaque articles put under LEFT sensor distance less than 20CM & hold 1 second to change fan speed, working cycle: "low-middle-high-off".





### **Light control**

Opaque articles put under RIGHT sensor distance less than 20CM & hold 1 second to change Light working status.



## **MAINTENANCE**

Before cleaning switch the unit off and pull out the plug.

### **I. Regular Cleaning**

Use a soft cloth moistened with hand-warm mildly soapy water or household cleaning detergent. Never use metal pads, chemical, abrasive material or stiff brush to clean the unit.

### **II. Monthly Cleaning for Grease Filter**

*ESSENTIAL: Clean the filter every month can prevent any risk of fire.*

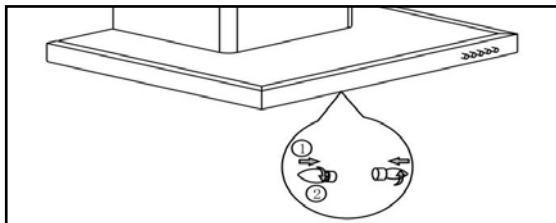
The filter collects grease, smoke and dust.....so the filter is directly affecting the efficiency of the cooker hood. If not cleaned, the grease residue (potential flammable) will saturate on the filter. Clean it with household cleaning detergent.

### **III. Annual Cleaning for Activated Carbon Filter**

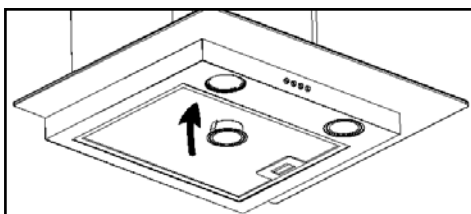
Apply SOLELY to unit that installed as a recirculation unit (not vented to the outside). This filter traps odours and must be replaced at least once a year depending on how frequent the cooker hood used.

#### IV. Bulb Replacement

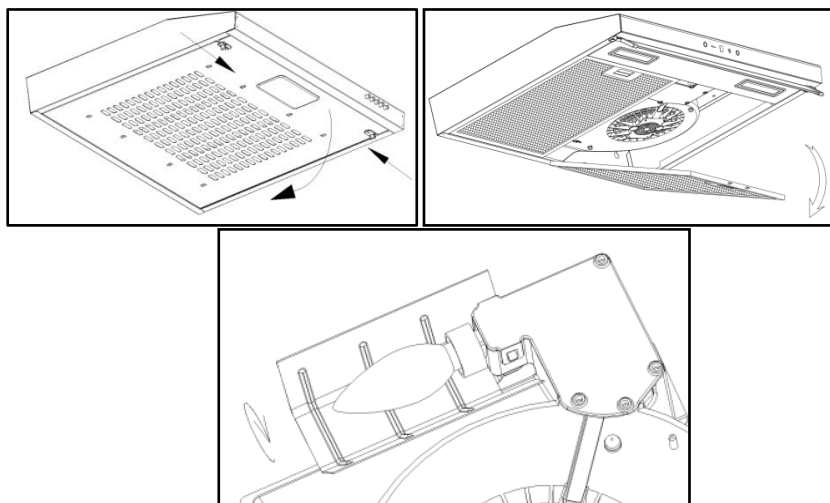
1. Switch the unit off and unplug the appliance.
  2. Remove the lamp cover by unscrewing the 2 screws.
  3. Unscrew the incandescent bulb
  4. Replace with the same type and rated bulb/lamp
- E14 Incandescent Bulb: (220V E14 Max 40W).



- Halogen lamp (max, 20W) & LED lamp (max, 1.5W).



- For Slim model.



## **TROUBLESHOOTING**

<b>Fault</b>	<b>Cause</b>	<b>Solution</b>
Light on, but fan does not work	The fan blade is jammed.	Switch of the unit and repair by qualified service personnel only.
	The motor is damaged.	
Both light and fan do not work	light bulb burn.	Replace the bulb with correct rating.
	Power cord looses.	Plug in to the power supply again.
Serious Vibration of the unit	The fan blade is damaged.	Switch of the unit and repair by qualified service personnel only.
	The fan motor is not fixed tightly.	Switch of the unit and repair by qualified service personnel only.
	The unit is not hung properly on the bracket.	Take down the unit and check whether the bracket is in proper location.
Suction performance not good	Too long distance between the unit and the cooking plane	Readjust the distance to 65-75cm

## **ENVIRONMENTAL PROTECTION**

Waste electrical products should not be disposed of with household waste. Please recycle where facilities exist. Check with your Local Authority or retailer for recycling advice.



This appliance is marked according to the European directive 2012/19/EU on Waste Electrical and Electronic Equipment (WEEE).

By ensuring this product is disposed of correctly, you will help prevent potential negative consequences for the environment and human health, which could otherwise be caused by inappropriate waste handling of this product.

The symbol on the product indicates that this product may not be treated as household waste. Instead it shall be handed over to the applicable collection point for the recycling of electrical and electronic equipment

Disposal must be carried out in accordance with local environmental regulations for waste disposal.

For more detailed information about treatment, recovery and recycling of this product, please contact your local city office, your household waste disposal service or the shop where you purchased the product.



**SONG SON CO., LTD - VIETNAM**  
**Marketing & Exclusive Distribution**

HO CHI MINH OFFICE & SHOWROOM  
4th Floor, Gia Cat Building  
316 Le Van Sy Street, Ward 1,  
Tan Binh Dist. HCMC  
Tel: 08-3991 30 83, 08- 2247, 38 77  
Email: [info@songsongo.com](mailto:info@songsongo.com)

[www.tomate.com.vn](http://www.tomate.com.vn)



I-CARE CALL CENTER

Ph: 1900 55 88 84

E: [info@tomate.com.vn](mailto:info@tomate.com.vn)

